

The European Social Dialogue Creating Added Value



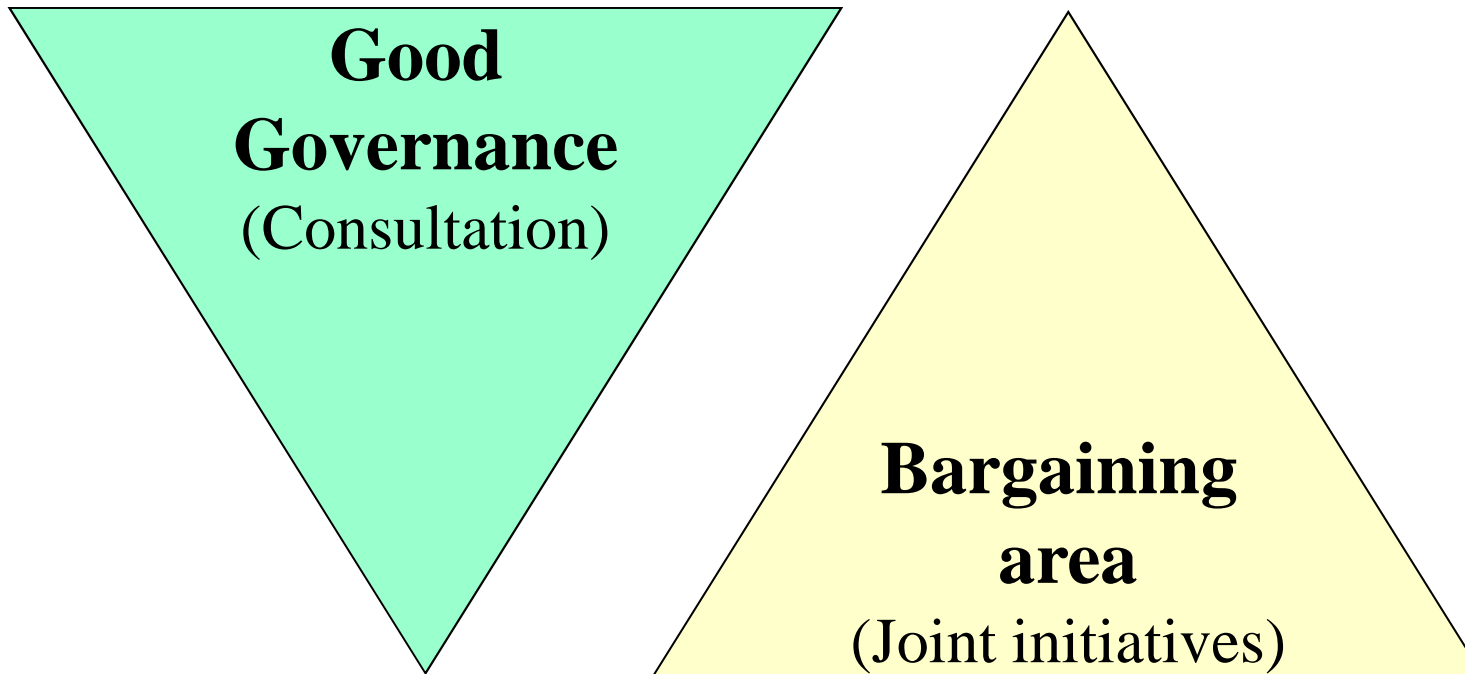
EASE

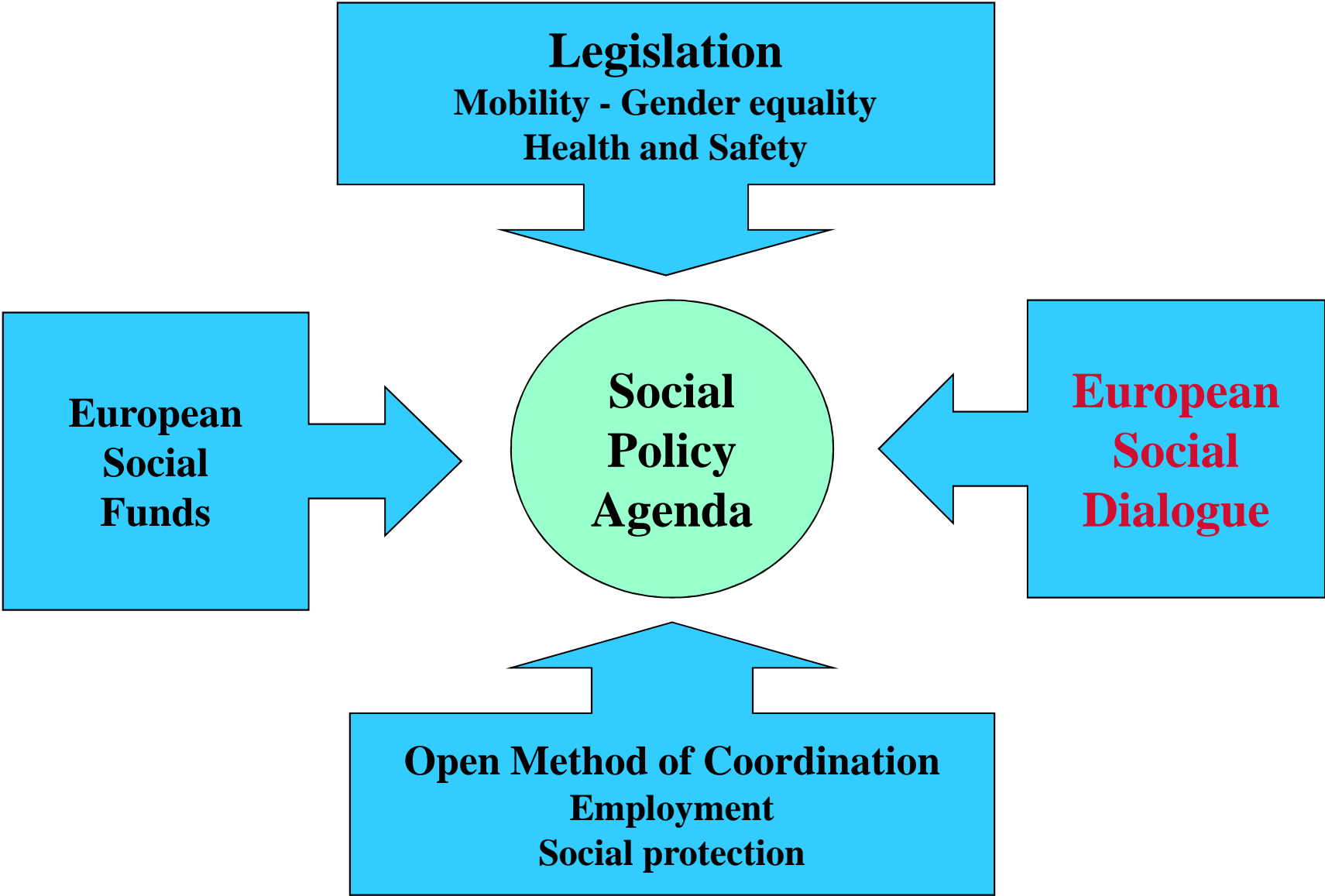
Arnhem, 18 May 2006

Markus Handke, European Commission,
DG Employment, Social Affairs & Equal
Opportunities



Why a social dialogue?

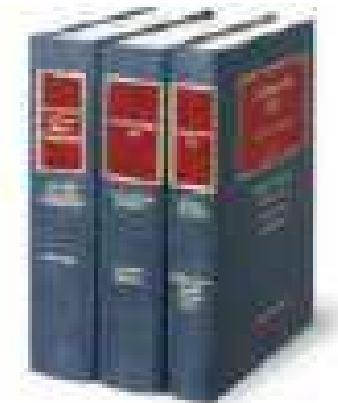




The place of social dialogue at European level

Institutional recognition

Article 138 of the EC Treaty



The European Commission

- The Commission shall have the task of promoting the consultation of management and labour at Community level and shall take any relevant measure to facilitate their dialogue by ensuring balanced support for the parties.



The place of social dialogue at European level

Institutional recognition

Article 139 of the EC Treaty

- Should management and labour so desire, the dialogue between them at Community level may lead to contractual relations, including agreements.



What forms of European Social Dialogue?

Tripartite dialogue

Trilogue on education and training

Dialogue on employment and social protection

Tripartite Social Summit for Growth and Employment

Bipartite dialogue

Social Dialogue Summits, Social Dialogue Committee

Sectoral Social dialogue Committees

Company level: EWC

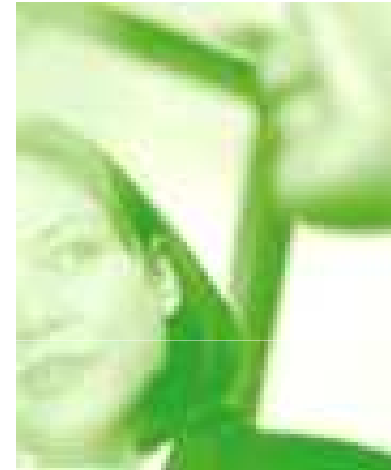


Bipartite dialogue

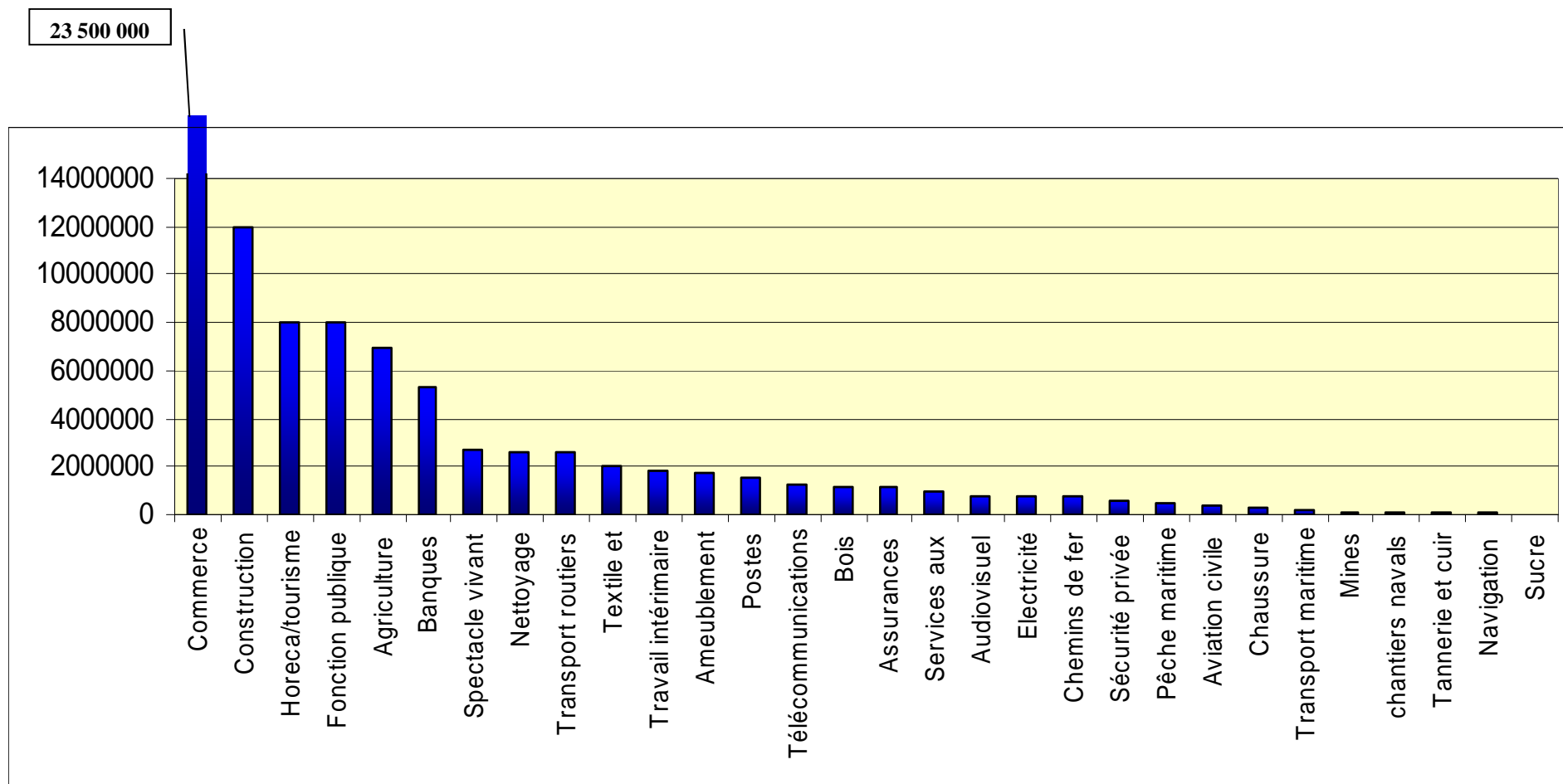
Voluntary
Autonomous
Commission support

- **Cross-industry dialogue**
- **Sectoral dialogue**

31 Sectoral dialogue committees established
(Commerce, Agriculture, Banking, Insurance,
Postal Services, Rail Transport, Construction...)



Sectoral social dialogue committees

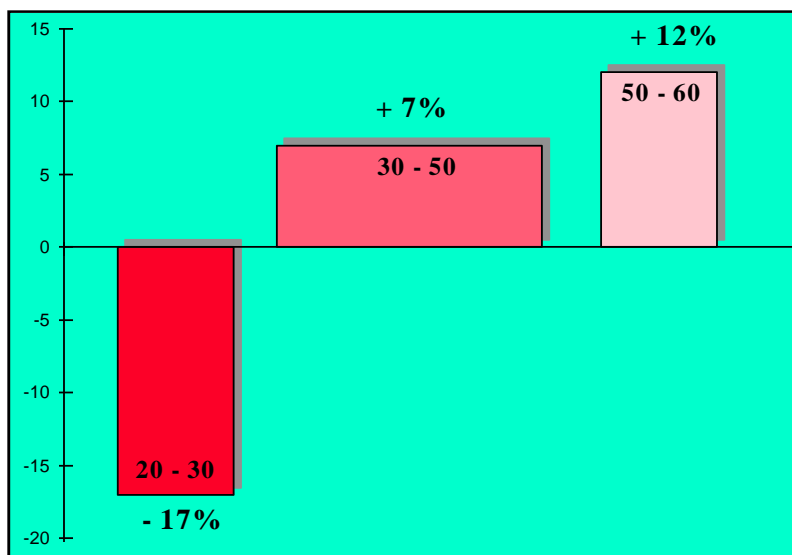


Demography

The Commission Green Paper "*Faced with demographic change, a new solidarity between the generations*", adopted on 16 March 2005

The number of older workers (aged 55 to 64) will increase by 24 million between 2005 and 2030.

The number of people aged over 80 will rise from 18.8 million today to 34.7 million in 2030.



Social partners' initiatives

Cross-industry (campagne)

Construction

Commerce (solidarity between generations)

Contributions to the European Youth Pact

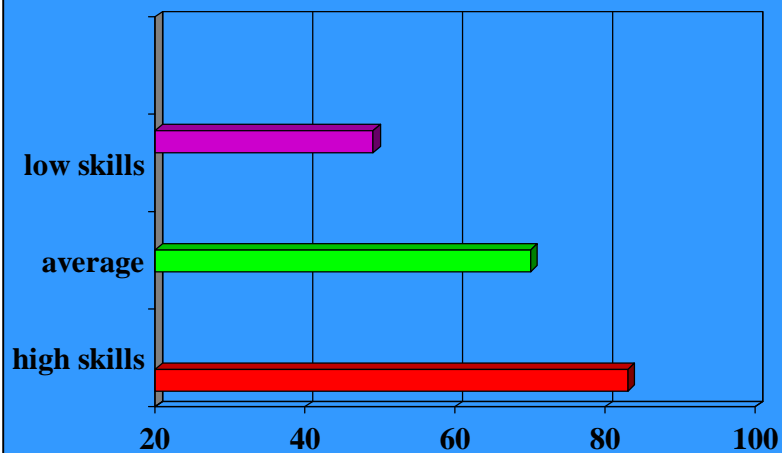


Vocational training

European employment strategy
Objective: Increase and improve investments in human capital

One worker out of two does not have access to vocational training

Employment per category of worker



Social partners' initiatives

Cross-industry
(framework of actions)
Construction (tutoring)
Banking
HORECA
Agriculture
Personal services



Health & Safety

European strategy for health and safety at the workplace 2007-2013

Simplification and rationalisation of interventions

Poor and unsafe working conditions

3% of GNP

500 millions work days a year lost

Accidents at work

4% of workers during the year

Social partners' initiatives

Cross-industry (stress)

Construction (Guide)

Agriculture (MSD)

Sea fishers (accidents)

Maritime transport (harrassment)

Extractive industries (silica-crystalline)



Enlargement

- Greater need for social dialogue
- Increased diversity
- Technical capacity of national social partners
- Technical capacity of European social partners
- Representativeness



The position of the sectors

1. agriculture, fishing, transport, mining

- objectives:**
- european level of industrial relations
 - strong implication in European politics

2. telecommunications, electricity, postal services, (construction)

- objectives:**
- smooth transition to open markets

3. banking sector, insurance sector

- objectives:**
- maintaining social peace during industrial changes
 - attendance to the companies' European developments (mergers, acquisitions)



The position of the sectors

4. textile, leather/shoes, sugar, wood/furniture

- objectives:**
- survival of the sector
 - adoption of social standards (European, ILO)

5. security, industrial cleaning, personal services, culture, temporary work

- objectives:**
- European visibility, European image
 - access to European decision makers, sectoral particularities

6. commerce: - participation at all levels of consultation



The position of the sports sector

Sports sector

politics, economy:

- limited integration at European level
- little exposure to European legislation
- little exposure to global competition

actors:

- predominance of SMEs

objectives:

- European visibility, European image
- access to European decision makers, sectoral particularities
- European level of industrial relations



Creation of sectoral social dialogue committee

Commission Decision of 20th May 1998

Social dialogue committees are established in those sectors where the social partners make a joint request to take part in a dialogue at European level, and where the organisations representing both sides of industry fulfil the following criteria:



Creation of sectoral social dialogue committee

Commission Decision of 20th May 1998

1. they shall relate to specific sectors or categories and be organised at European level
2. they shall consist of organisations which are themselves an integral and recognized part of Member States' social partners structures and have the capacity to negotiate agreements, and which are representative of several Members states
3. they shall have adequate structures to ensure their effective participation in the work of the Committees



Information sources

- Website of the Commission
 - http://europa.eu.int/comm/employment_social/index_en.htm
- EIRO (European industrial relations observatory online) :
 - <http://www.eiro.eurofound.ie/>

